

The  
WAKIGHAN

---

1941



The  
WAKELON HIGH SCHOOL

---

• 1941 •

---

Published by the Photography Club  
of  
WAKELON HIGH SCHOOL  
Zebulon, North Carolina

OLIVIA RANEY LIBRARY  
4016 Carya Drive  
Raleigh, NC 27610



*Top: Aerial View, Wakelon Schools*  
*Left Center: High School*      *Right Center: Graded Schools*  
*Bottom: Vocational Building*

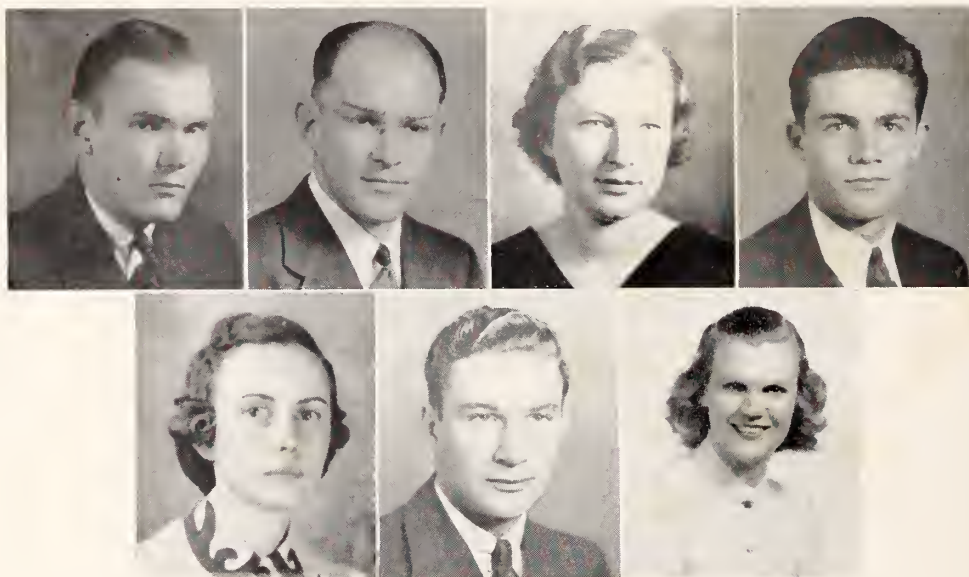




E. H. MOSER

## Dedication

Because we love him and appreciate all the many things he has done for Wakelon High School and to express our high esteem for one who has by his infinite modesty and consistency endeared himself to us, we, the students of Wakelon High School, wish for him the joys of continued achievement, friendships, and years of service, and dedicate this Volume of the WAK-IGH-AN to that fine gentleman, inspiring teacher, and profound scholar.



FACULTY

LEWIS W. ALEXANDER  
*Science-Coach*

CLEATON O. ARMSTRONG  
*Coach-History*

MAMIE BEAM  
*English*

JEANNETTE PETERSON  
*Typing-Shorthand*

STUART BLACK  
*Agriculture*

DOROTHY BRAKE  
*English-History*

RAYMOND MODLIN  
*Foreign Language*

Teachers Not Photographed

MARY LACY PALMER  
*Vocational - Home Ec.*

MARY HAZEL THOMPSON  
*Mathematics*

FRANCES MASSEY  
*Public School Music*



C. S. CHAMBLEE  
JOE T. KNOTT

FOSTER D. FINCH  
DR. L. M. MASSEY

WAKELON HIGH SCHOOL BOARD

DR. L. M. MASSEY, *Chairman*

JOE T. KNOTT

C. S. CHAMBLEE, *Secretary*

FOSTER D. FINCH

\*J. K. BARROW

\* Not photographed.

SENIOR CLASS POEM

This long looked for hour at last is here,  
 We're happy and yet we're sad,  
 To think the end of our schooling's so near,  
 We can't be especially glad.

You, gracious Juniors, will take our place,  
 Be kind to our teachers dear.  
 We will miss everyone's happy face,  
 When we're scattered far and near.

We are very proud of our school,  
 Our teachers, our classmates and all.  
 The way each student obeys each rule,  
 It makes us wish to return next fall.

We're also proud of our grand old class,  
 But we've got a right to be.  
 There is an old saying, "Work and Pass."  
 And to this we all agree.

To whom do we owe most of our success?  
 Who sends to school each day?  
 Our parents, whom we all bless,  
 They have shown us the way.

God bless us as we go out in life.  
 And our helpers each and every one.  
 Don't make us go through too much strife,  
 And reward us when life is done.

JACKIE GREENE.

CLASS FLOWER . . . . . *White Carnation*  
 CLASS COLORS . . . . . *Maroon and White*  
 CLASS MOTTO . . . . . *We'll find a way or make one*

CLASS NIGHT EXERCISES  
 Tuesday, April 29, 8 P.M.

GRADUATION EXERCISES  
 Friday, May 2, 10:30 A.M.

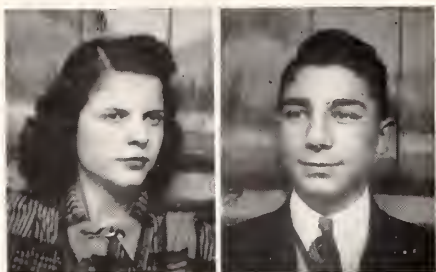


## SENIOR CLASS OFFICERS

IRA JOYNER . . . . .	<i>President</i>
DURWOOD STALLINGS . . . . .	<i>Vice President</i>
COURTNEY ALLEN . . . . .	<i>Secretary</i>
ELOISE TIPPETT . . . . .	<i>Treasurer</i>

## SUPERLATIVES

Most Studious Boy—BILLY GREEN	Most Ambitious Boy—BILLY GREEN
Most Studious Girl—CLEO GLOVER	Most Ambitious Girl—CLEO GLOVER
Most Intellectual Boy—R. H. BRANTLEY	Best Sport Boy—EARL ANTONE
Most Intellectual Girl—CLEO GLOVER	Best Sport Girl—DOT HORTON
Quietest Boy—CLAUDIE DUKE	Most Friendly Boy—WADE DAVID
Quietest Girl—MARIE PHILLIPS	Most Friendly Girl—JEAN FLOWERS
Most Courteous Boy—DURWOOD STALLINGS	REBECCA WATKINS
Most Charming Girl—JEAN FLOWERS	Most Musical Boy—IRA JOYNER
Most Dignified Boy—BILLY GREEN	Most Musical Girl—DOT HORTON
Most Dignified Girl—DOT HARRIS	Most Popular Boy—DURWOOD STALLINGS
Cutest Boy—WILBUR HALES	Most Popular Girl—JEAN FLOWERS
Cutest Girl—VIRGINIA BRIDGERS	Wittiest Boy—R. H. BRANTLEY
DOT HORTON	Wittiest Girl—DORIS PERRY
Handsomest Boy—J. W. CARROLL	Best All-Round Athletic Boy—EARL ANTONE
Prettiest Girl—JEAN FLOWERS	J. W. CARROLL
Baby Boy—J. K. WATSON	Best All-Round Athletic Girl—DOT HORTON
IRA JOYNER	Best All-Round Boy—DURWOOD STALLINGS
Baby Girl—DORCAS LILES	Best All-Round Girl—JEAN FLOWERS



COURTNEY ELAINE ALLEN

*Courtie*

Philomathean Society; Dramatic Club, President of Club.

WILLIAM EARL ANTONE

*Tony*

Philanthropic Society; Monogram Club.



WALTER EDWARD BAKER

*Joe*

Erosophian Society; Agriculture Club.

INEZ FRANCES BOBBITT

*Punk*

Philomathean Society; Dramatic Club.



RUSSELL HAROLD BRANTLEY

*Hooey*

Erosophian Society; Debating Club.

LILLA VIRGINIA BRIDGERS

*Jenny*

Philomathean Society; Dramatic Club.



SARAH ELSIE BUNN

*Sara*

Philomathean Society; Dramatic Club.

MARY ELIZABETH CONE

*Lib*

Philomathean Society; Dramatic Club.



EDNA CHRISTINE CROOM

G. M. Bell Society; Social Service Club.

WADE JACKSON DAVID

*Shorty*

Philanthropic Society; Monogram Club.



ROBERT DOYLE

Philanthropic Society; Travel Club.

JOHN CLAUDIE DUKE

Philanthropic Society; Agriculture Club.

MARY DAZELLE DUKE  
*Dell*

G. M. Bell Society; Travel Club.

IDA MAE EATMAN  
Philomathean Society; Photography Club.

HAROLD GILBERT FINCH  
*Harold*

JEAN CAROLYN FLOWERS  
*Jeannie*  
Philomathean Society; Debating Club.

CLEO CORNELIA GLOVER  
*Teo*

Philomathean Society; Debating Club.

JACQUELINE LILES GREEN  
*Jackie*

G. M. Bell Society; Social Service.

WILBUR CONE HALES  
*Crazy*

Erosophian Society; Agriculture Club.

DOROTHY MAE HARRIS  
*Dot*

Philomathean Society; Social Service Club.

JACK DEXTER HINTON  
*Dropey*

Philanthropic Society; Photography Club.

MELBA BROWN HOOD  
Philomathean Society; Social Service Club.

CAMILLA GAY HORNER  
*Saucy*

G. M. Bell Society; Social Service Club.

ROBERT CLARENCE HORNER  
*Duck*

Erosophian Society; Dramatic Club.

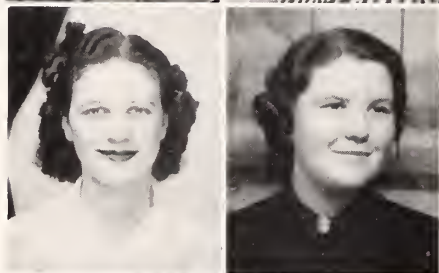






DOROTHY HERNDON HORTON  
*Dot*  
Philomathean Society; Monogram Club President.

MAZIE ALICE HORTON  
G. M. Bell Society; Social Service Club.



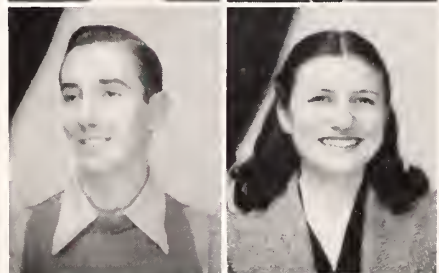
RACHEL ELIZABETH HORTON  
G. M. Bell Society; Social Service Club.

REBECCA JEFFREYS HORTON  
*Becky*  
Philomathean Society; Dramatic Club Secretary.



REBECCA RUTH HORTON  
*Becky Ruth*  
Philomathean Society; Travel Club.

JAMES TAZE JOHNSON  
*J. T. Johnson*  
Erosophian Society; Agriculture.



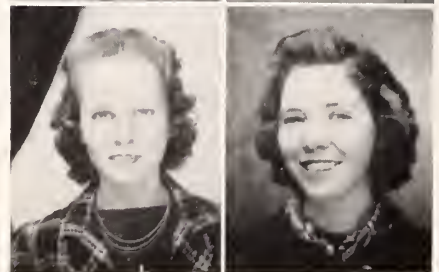
IRA ELLIS JOYNER  
*Sandford*  
Philanthropic Society; Dramatic Club.

ALLIE DORCAS LILE  
Philomathean Society; Photography Club.



MARGARET DELAINE MARSHBURN  
G. M. Bell Society; Social Service Club.

ELIZABETH PATE  
*Lib*  
G. M. Bell Society; Dramatic Club.

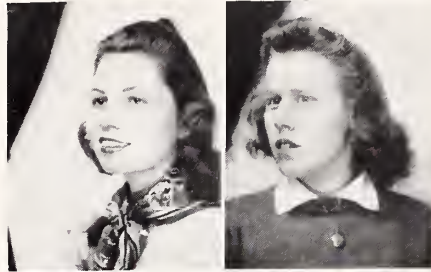


MARGARET ALMA PEARCE  
*Rat*  
G. M. Bell Society; Social Service Club.

RACHEL JUANITA PEARCE  
G. M. Bell Society; Social Service Club.



SARAH LYNN PEARCE  
*Sarah*

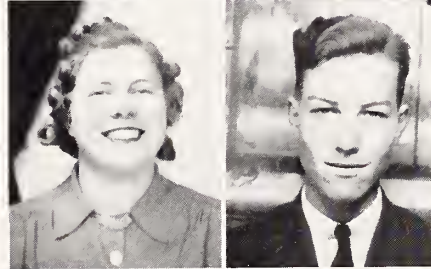


MARIE PHILLIPS  
*Rie*

Philomathean Society; Social Service Club.

BESSIE MAE PULLEY

Philomathean Society; Dramatic Club.

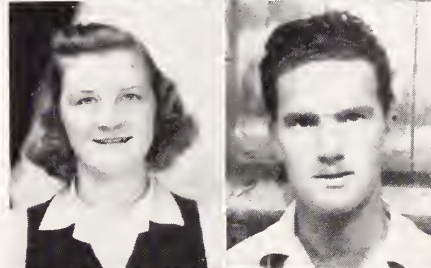


SYLVESTER MAYNARD PURYEAR

Philanthropic Society; Travel Club.

ELOISE TIPPITT

G. M. Bell Society; Dramatic Club.



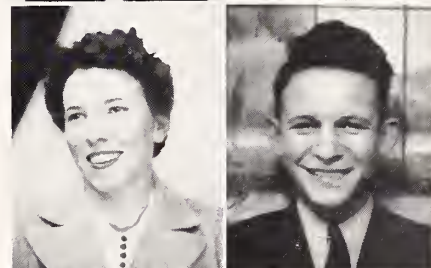
WALLACE CONWAY UNDERHILL

Philanthropic Society; Travel Club.

REBECCA ELIZABETH WATKINS

*Dink*

Philomathean Society; Social Service Club.



JOHN KEMP WATSON

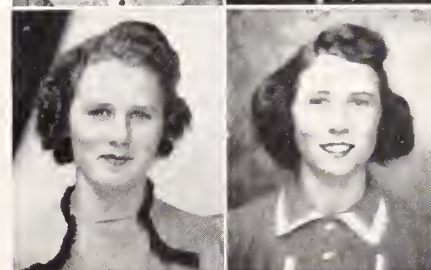
*Lindbergh*

Erosophian Society; Photography Club.

NARSISSIE ELIZABETH WEATHERS

*Duck*

G. M. Bell Society; Dramatic Club.



JODIE MAE WEATHERS

*Jodie*

G. M. Bell Society; Dramatic Club.

Not Pictured

JAMES WILMER CARROLL  
ALLAN BURL DENTON  
GEORGE SPIVEY FERRELL  
WILLIAM ROBERT FRAZER

WILLIAM LESTER GREEN  
JAMES CARL GREGORY  
DELLA MAE HICKS  
HOMER WARREN LILES

HENRY LINERE PEARCE  
DORIS MAE PERRY  
STEPHEN DURWOOD STALLINGS  
MATTIE CATHERINE WELLS



## JUNIORS

*President*

MARGARET IHRIE  
LETHA M. SIMPSON

*Vice President*

JACK LILES  
KIRBY PEARCE

*Secretary and Treasurer*

EMMA JEAN PACE  
DORIS KIMBALL

*Left to right, bottom row:* Elsie Privitt, Lucille Pearce, Oren Massey, Doris Kimball, Marshall Kieth, Mildred Mitchill, Maggie Carter, Lily Mae Frazer, Margaret Ihrie, Melba Clark  
*Second row:* Mildred Oakley, Emilie Rose Bissette, Dorothy Driver, Letha Simpson, Edna Phillips, Kadall Strother, Emma Jean Pace, Myra Gay, Alma Gray Pulley  
*Third row:* Cora Mae Watkins, Sarah Kannon, Mary Elizabeth Eddins, Alease White, Eunice Phelps, Janie Parker, G. C. Brannon, Allen Mitchell, Henry Massey  
*Fourth row:* Corinnia Pearce, Ralph Mitchell, Daphne Lewis, Cleo Hicks, Zelma Gray Powell, Louise Pierce, M. T. Ray, Donald Baker  
*Fifth row:* Ressie Perry, Kenneth Wright, Ervin Joye, Nannie Gordon, Janie Pearce, Monroe Jones, Kirby Pearce, Fred Bobbitt, Dave Finch, Buster Fowler, Donald Joyner, Eugene Denton  
*Sixth row:* C. E. Duke, Maylon Richards, Marie Dean, Durwood Perry, Jack Liles, Donald Massey, Sam Horton, George Henry Mitchell.





1941

SOPHOMORES

Officers

DEXTER JOYNER, *President*  
 WILBUR PEARCE, *Vice President*  
 TOM LILES, *Secretary-Treasurer*

EFFIE JANE BRIDGES, *President*  
 ELLA MAE KEMP, *Secretary-Treasurer*

*Left to right, first row:* Allan Pippin, Charles Chamblee, Faye Carter, Eldred King, Dorothy Ann Glover, Dwight Gay, Ann Massey, Ella Mae Kemp, Wilbur Charles Cone, Jackie Denton  
*Second row:* Sprite Parrish, Wallace Baker, Gwendolyn Ferrell, Norma Lee Horton, Ann Faulkner, Sprite Ferrell, Emma Horton, Beath Massey, Ruth Newton  
*Third row:* Elwood Parker, Eloise Bobbitt, Howard Starnes, Eula Lee Denton, Curtis Wright, Earl Gay, Elizabeth Williams, Lucy Lee Tippitt, Louise Baker  
*Fourth row:* Wilbur Charles Pearce, Mary Elizabeth Alford, Dexter Joyner, Fred Page, Elizabeth Pace, Gladys Hunter, Fola McGee, Mary Leigh Crowder  
*Fifth row:* Laura Lynn Ray, Rachel Perry, Ned Denton, Lottie Mae Pulley, Melba Parker, Joyce Temples, Effie Jane Bridges, Margaret Bunn, Dorothy Mizelle  
*Sixth row:* Billy Ferrell, Allan Hood, Harvey Hood, Melba Duke, Polly Baker, Bobby Williams, Wesley Richards, Allen Bunn, Mary Alice Conn  
*Back row:* Mr. Alexander, Tom Liles, James Alford, Leamon Pearce, James Pearce, Wayne Parrish, Douglas Alford, Harold Pippin, Mr. Armstrong

Not Pictured

Francis Smith  
 Alease Martin

Betsy Jane Glover  
 Rava Nell Driver

Margaret Perry  
 Rudolph Moss



## FRESHMAN CLASS

*President*  
 LYDIA REE HINTON  
 FRED PIPPIN

*Vice President*  
 ELOISE MITCHEL  
 RALPH CREECH

*Secretary and Treasurer*  
 ROSA MAE BAKER  
 ELLIS WEATHERS

*Left to right, bottom row:* Miss Beam, Ralph Creech, Rosco Arnold, Fred Pippin, John Kimball, Doretha Parrish, Earl Stalling, Elizabeth Ihrie, Etta V. Liles, Mr. Modlin  
*Second row:* Frank Moss, Mary Frances May, Dorothy Mae Oakley, Crystal Perry, Alva Lee Wiggs, Vera Ruth Perry, Allyne Starnes, Ellis Weathers, Leslie Simpson, Frederick Corbitt  
*Third row:* Wyatt Horton, Earl Pearce, Betty King, Lydia Ree Hinton, Archie Bunn, Lovie Jones, Lillian Eatman, Pansy Oakley, Naomi Puryear, Ruby Mae Duke  
*Fourth row:* Eloise Mitchell, Doris Cone, Bessie Kay Williams, Inez Hood, Pauline Cannon, Rosa Mae Baker, Lillian Blackley, Katherine Pulley, Rachel Moody  
*Fifth row:* Geraldine Wagwood, Rudine King, Megs Lee Pearce, Bobby Eddins, Wilton Bunn, Jessie Pulley, John Rabyon, Billy Brantly  
*Sixth row:* Ronald Green, Horace Perry, Edzelle Martin, Joe Thomas Knott, Evelyn Perry, Ruth Weathers, Fred Pittman, J. D. Dixon, Hough Clark





SNAPS



SEVENTH GRADE



## SEVENTH GRADE

*President*

BETTY LOU CARTER

*Vice President*

CARRIE BRIDGES

*Secretary*

WILLA DEAN EDWARDS

*Treasurer*

JANE BAKER

*Left to right, bottom row:* Jane Baker, Andrew Allen Droughon, Robert Denton, Charles Bullock, Delbert Gay, Ned Frazier, Geraldine Gay, Betty Lou Carter

*Second row:* Thurston Arnold, Mildred Hagwood, Dorothy Denton, Elsie Doyle, L. T. Averette, Jr., Edith Bridges, Angie Carter, Elizabeth Baker

*Third row:* Haywood Hodge, Elmo Finch, Mayon Duke, Braxton Eddins, Elamarie Brewer

*Fourth row:* Willa Dean Edwards, Emma Vic Gill, Carrie Bridges, Robert Gordon, Bobby Duke

*Fifth row:* James Robert Fowler, Charles Clark, Coleman Denton, Maxine Duke

## SEVENTH GRADE

MRS. CHAMBLEE

*President*

JEWELL HOOD

*Vice President*

BAXTER HOPKINS

*Secretary and Treasurer*

BENNY PERRY

*Left to right, bottom row:* Mary Gorden Massey, Hilda Winstead, Charles Horton

*Second row:* Carolyn Mangum, Pauline Pittman, Baxter Hopkins, Hilda Lewis, Hutch Locklear, Thomas Pearce

*Third row:* Faye Williams, Doris Richards, Barbara Liles, Gloria Mae Phillips, E. G. Richards

*Fourth row:* Annie Ruth Parrish, Marie Murray, Hellen Wells, Nannie Ree Parrish, Eugene Massey

*Fifth row:* Harvey Hopkins, Crocker Perry, Solon Locklear, Lucille Williams, Lera Mae Pearce, Peggie Leola Perry

**Not Pictured**

Mafoye Martin, Margaret Pearce, Catherine Carlyle, Louise Pearce

## PHILOMATHEAN SOCIETY

## FALL TERM

*President*, JEAN FLOWERS  
*Vice President*, COURTNEY ALLEN  
*Secretary*, EMMA JEAN PACE  
*Treasurer*, NORMA LEE

## SPRING TERM

*President*, VIRGINIA BRIDGES  
*Vice President*, DOROTHY HARRIS  
*Secretary*, CORINNIA PEARCE  
*Treasurer*, ELLA MAE KEMP

## EROSOPHIAN SOCIETY

## FALL TERM

*President*, BILLY GREEN  
*Vice President*, DURWOOD STALLINGS  
*Secretary*, WILBUR HALES  
*Treasurer*, GEORGE FERRELL

## SPRING TERM

*President*, R. H. BRANTLY  
*Vice President*, ALLEN DENTON  
*Secretary*, J. T. JOHNSON  
*Treasurer*, DONALD BAKER



## G. M. BELL SOCIETY

## FALL TERM

*President*, SARAH PEARCE  
*Vice President*, MARGARET MARSHBURN  
*Secretary*, DOROTHY DRIVER  
*Treasurer*, EMILIE ROSE BUSITTE

## SPRING TERM

*President*, ELOISE TIPPITT  
*Vice President*, MAZIE HORTON  
*Secretary*, ZELMA GRAY POWELL  
*Treasurer*, LETHA MAE SIMPSON

## PHILANTHROPIC SOCIETY

## FALL TERM

*President*, J. K. WATSON  
*Vice President*, IRA JOYNER  
*Secretary*, DONALD JOYNER  
*Treasurer*, OREN MASSEY

## SPRING TERM

*President*, J. W. CARROL  
*Vice President*, WADE DAVID  
*Secretary*, HOMER LILES  
*Treasurer*, HARVEY PITTMON



**FOOTBALL**

C. O. ARMSTRONG  
*Coach*



**BASKETBALL**

LOUIS W. ALEXANDER  
*Coach*



**BASEBALL**

C. O. ARMSTRONG  
*Coach*





**GIRLS' BASKETBALL**

MISS MAMIE BEAM

*Coach*



**GIRLS' SOFTBALL**

MISS MAMIE BEAM

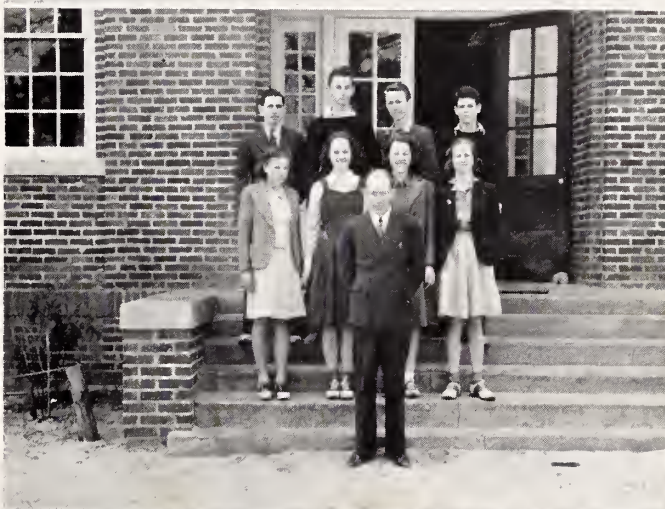
*Coach*



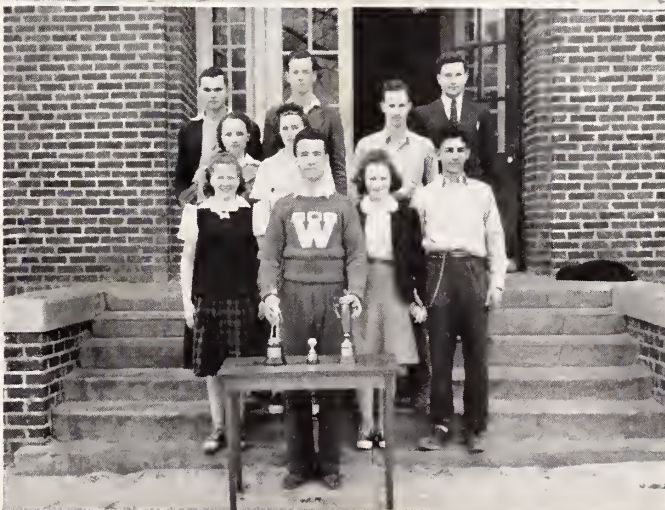
**FUTURE FARMERS OF AMERICA**  
**STUART BLACK**  
*Counselor*



**DEBATING CLUB**  
**C. O. ARMSTRONG**  
*Counselor*



**MONOGRAM CLUB**  
**RAY MODLIN**  
*Counselor*





HOME ECONOMICS CLUB

MISS MARY LACY PALMER  
*Adviser*



PHOTOGRAPHY CLUB

LOUIS W. ALEXANDER  
*Adviser*



TRAVELLER'S CLUB

MISS MAMIE BEAM  
*Adviser*



GLEE CLUB

MRS. FRANCES MASSEY  
*Director*



DRAMATICS

MISS DOROTHY BRAKE  
*Director*



BUSINESS CLUB

MISS JEANETTE PETERSON  
*Adviser*





STUDENT COUNCIL

LOUIS W. ALEXANDER  
*Adviser*



SOCIAL SERVICE CLUB

MRS. MARY HAZEL THOMPSON  
*Adviser*

Compliments of

W. C. WADE

M. T. DEBNAM

W. B. BUNN

R. H. BRIDGERS

CHAS. H. RHODES

Compliments of

**PHILLIP'S  
GROCERY**

Quality Food  
and Service

Zebulon, N. C.

Compliments of

**ZEBULON  
DRY CLEANERS**

Call 5451

Compliments of

**PAGE STORE CO.**

Zebulon, N. C.

Compliments of

**PEOPLES  
BANK**

**&**

**TRUST**

**Co.**

ZEBULON, N. C.

***Best Wishes to the  
Senior Class***

**C. B. EDDINS  
SHOE SHOP**

Zebulon, N. C.



# WAKELON TRADING COMPANY

Our Farm Credit Plan  
Will Interest You.

ROYSTER'S FIELD TESTED FERTILIZERS

## FOR INSURANCE

Fire, Wind or Tornado

Hail

Farm Loans

FHA Loans

and

REAL ESTATE

See

**D. D. CHAMBLEE**

Compliments of

MR. and MRS. A. S. BOGEN

—  
**THE LEADER  
DEPARTMENT STORE**

**Call**

**MATHEW'S**

**Phone 2431**

DAY PHONE 2171

NIGHT PHONE 2841 AND 2021

**J. A. KEMP AND SONS**

**GENERAL MERCHANTS  
FUNERAL DIRECTORS**

ZEBULON, NORTH CAROLINA

REPAIR

PARTS

Compliments of

**BUNN ELECTRIC CO.**

Zebulon, N. C.

SERVICE

QUALITY

**J. L. STELL**

**DRY CLEANERS**

21 Years Experience

**LEWIS  
FURNITURE  
COMPANY**

Funeral Directors  
and  
Embalmers

WENDELL, N. C.

***Congratulations  
to the  
Senior Class***

**ZEBULON  
DRUG  
Co.**

**Phone 2111**

Shop At Home — It Pays

**FLOWERS**  
5c-10c to \$5.00 STORE

Home Store for Home People

ZEBULON, N. C.

Recreation and Dining

PLAY GOLF : SWIM  
DANCE AND DINE

... at ...

**TIPPETT'S**

# ZEBULON SUPPLY CO.

*The Home of*

## Beautiful Furniture

*Also*

**UNDERTAKERS and EMBALMERS**

### M. J. SEXTON INSURANCE

FIRE : AUTOMOBILE : HAIL

Zebulon, N. C.

Compliments of the

### **ELITE BEAUTY SALON**

### Fancy Meats : Groceries

For Best of Service and  
Satisfaction Visit

### QUALITY FOOD STORE

PHONE 5311

Elwood Perry, Mgr.

Compliments of

### MASSEY LUMBER CO.

Zebulon, N. C.



# THE RECORD PUBLISHING COMPANY

PRINTERS and PUBLISHERS

College : Church : Commercial

ZEBULON, NORTH CAROLINA

***Congratulations  
to Class of  
1941***

**WAKELON THEATRE**

**CITY MARKET**

Quality Foods

First Class Service

**PAUL V. BRANTLEY**

MERCHANT

Zebulon, N. C.

Gas, Oils, Fuel Oils, Groceries  
Batteries, Tires, Tubes  
and Auto Service

**A. G. KEMP**

ZEBULON, N. C.

The Seed Man, All Kinds Seeds,  
Dry Goods, Shoes, Groceries,  
Hardware.



Electricity — A GREAT SERVICE

—Yet It's CHEAP

**CAROLINA POWER & LIGHT COMPANY**

PRODUCTS OF GENERAL MOTORS

**J. M. CHEVROLET COMPANY**

Olds and Chevrolet Sales and Service

Main Street

ZEBULON, NORTH CAROLINA

OLDSMOBILE • CHEVROLET

**DIXIE FIREWORKS CO.**

MANUFACTURERS AND DISTRIBUTORS

OF

**COMMERCIAL and DISPLAY FIREWORKS**

ZEBULON, NORTH CAROLINA

Compliments of

**Antonne's Dept. Store**

*"Best Suits for the Money"*

Zebulon, N. C.

Compliments of

**TEMPLE'S MARKET**

***Good Meats***

ZEBULON, N. C.

**PATRONIZE OUR ADVERTISERS**



## BUILDERS DREAMS

VISIONS created by the imagination precede the achievement of any really great accomplishment. The ability to weave the threads of imagination into the finished fabric is equally important.

It has been the privilege of the EDWARDS & BROUGHTON COMPANY to cooperate with the staff in creating their vision into material form.

Such coöperation is one of the "visions" which precede the building of a successful business, and is a part of the working policy of the EDWARDS & BROUGHTON COMPANY.

To those Staffs desiring complete cooperation, we offer unexcelled service.

You, too, may be proud of your annual.

*Correspondence is Invited*

EDWARDS & BROUGHTON CO.

RALEIGH, NORTH CAROLINA



**A u t o g r a p h s**



